



# PEDDLER FREIGHT

Division 1 - MCR - NMRA

Akron - Canton - Youngstown Division

Serving Carroll, Columbiana, Harrison, Mahoning, Portage, Stark, Summit, Trumbull, Tuscarawas and Wayne Counties

[www.div1-mcr-nmra.org](http://www.div1-mcr-nmra.org)

Volume 30 - Issue 8

May 2023

## Superintendent's Bulletin



It has been said, and demonstrated many times, that one picture is worth a thousand words. Recently my mom turned 91 years young and I was able to give her a gift that brought her great happiness and was a long time in coming. When my mom was younger, she asked her father, my grandfather, for a train set. This was back in an earlier time when certain toys were thought to be gender specific. My mom was told

that boys play with trains and girls play with dolls.

Fast forward a lot of years and my mom's interest in having a train set was rekindled and she bought a Lionel set. This is when she lived out of state and has since moved back to Ohio and her train set has been stored in the box ever since.



Somewhere along the way she acquired an HO scale train set. About a month ago she set up her HO train set and called me to say so and that the train ran rough and it looked like the wires weren't that well connected.

A short drive to my mom's found the main culprit to be dirty train track. The track was cleaned, wires reconnected and the HO scale train was running around well enough on its small circle of track. Well, this visit led to discussion on the possibility of a larger table to set up both train sets and a rough idea of a table was developed. The table was built and hauled down to the basement where the legs would be attached and the trains set up. The day before my mom's 91<sup>st</sup> birthday the Lionel set was up and running.

As a father there is a certain feeling of joy when your likes are shared with your children. There is a whole different level of joy when you can share your hobby of model railroading with your mom. The photo says it all and the expression on my mom's face is priceless.

All Aboard!!

Jim DiPaola, Superintendent  
NMRA, MCR, Division 1

## Division 1 T-TRAK



Progress continues on Division 1 T-TRAK modules.

Lloyd Horst stands in the middle of the first mock-up of the HO T-TRAK modules.

## May 21 Division 1 Meeting Clinic on Module Wiring

- Lloyd Horst and Bob Ashley, Jr. will demonstrate how to wire your module to the T-TRAK and Div. 1 standards.
- Division 1 is providing, for **FREE**, the Anderson Powerpole connectors for the Division provided free modules. You may purchase extra Powerpole connectors for your other modules at a reduced price.
- Lloyd will have the Division Powerpole crimper (we only have one) so that everyone can complete their connections, at least for the free modules. Time permitting we will complete all modules brought to the meeting. He will also bring extra wire cutting and stripping tools for those who do not have any.

### You need to bring:

- Your module with the Kato 24-818 wiring harness already attached to the track and the wires through the top of the module.
- Wire strippers
- Wire cutters
- Your free Powerpole socket from Bob.
- Powerpole crimper if you have one.

## 2023 Division 1 Events

May 21 - Ravenna Township Meeting Hall  
June - Date and Location TBA

**Division 1, MCR, NMRA**  
**Meeting Minutes**  
**April 16, 2023**

**1. Welcome:**

- ~ Call to order: 2:07 PM.
- ~ By: Jim DiPaola, Superintendent
- ~ Participants: 20 members.
- ~ New member Ken Bowman.
- ~ Location: Ravenna Township Offices.

**2. Clerk:** Jeff Stone:

- ~ Previous meeting minutes published in Peddler freight.
- ~ Motion to approve minutes, (Steve Zapytowski/Lloyd Horst) motion carried.

**3. Treasurer:** Mike Bradley:

- ~ Report presented by treasurer. Available on request.
- ~ Income: \$4 from patch sales, \$35 Jaite Station sale, \$38 March 50/50.
- ~ Module income, half goes to checking, half to Module Fund.
- ~ Motion to approve treasurer report, (Steve Zapytowski/Sam Eisele) motion carried.

**4. Superintendent:** Jim DiPaola:

- ~ MCR convention, 212 registered, 4 - 7 May in Pittsburgh.
- ~ Salem show now in Austintown. Venue not as big. Good turnout.

**5. Peddler Freight Committee:** Bruce Hukill: Deadline for Peddler Freight Friday, 24 April.

**6. Membership Committee:** Jim Peters: Members 77.

**7. Clinic Committee:** Jim DiPaola: Today's clinic, dumpsters by Sam Eisele and attaching module track with screws by Jeff Stone. Thank you, Sam & Jeff!

**8. Achievement Committee:** Lloyd Horst: No report.

**9. Module Committee:** Lloyd Horst: All module comments/information consolidated here.

- ~ While cutting modules they realized the material releases formaldehyde. Please use respirators. (Bruce Hukill)
- ~ Bob Ashley, Jr. brought track edge guards for modules with modification. Thank you, Bob!
- ~ Bob Ashley, Jr. also brought 3D printed sockets for the cable connectors to be mounted in module backs. Thanks again, Bob!
- ~ Bob Ashley, Sr. brought up a point about contest categories for modules to insure that HO T-TRAK modules have their own category.
- ~ When the wiring harnesses are assembled, and the front track plug will be red, the back track will be yellow. (Bob Ashley, Jr.)

**10. Facebook Committee:** Jim DiPaola: No report.

**11. Website Committee:** Steve Zapytowski: No report.

**12. Old Business:** Jim DiPaola: None.

**13. New Business:** Jim DiPaola: None.

**14. Bring and Brag:**

- ~ Patrick Wamsley brought two steam locomotives built from Casey Jones kits. He's detailing them to fit his layout theme.

**15. Good of the Order/Announcements:**

- ~ Lloyd Horst had a question about a N-scale locomotive shorting out published in *Model Railroader* "Ask MR." (May 2023 page 18)
- ~ T-TRAK modules are welcome in Pittsburgh – Don Bonk.
- ~ Bob Ashley, Jr. brought a car calibration track from Chuck Boyers layout, free to a good home.
- ~ Bob Ashley, Sr. recognized the progress Patrick Wamsley is making on Bob's old layout.
- ~ Bruce Hukill brought various magazines, free to a good home.
- ~ 50/50 won by Chuck, and donated back to Division 1. (\$30).
- ~ Good luck finding that short, Lloyd.

**16. Adjournment:**

- ~ Motion to adjourn carried.
- ~ Meeting adjourned at 2:45 PM.
- ~ Clinics followed meeting.

Respectfully submitted,  
Jeff Stone, Clerk, Division 1.

**Division 1, MCR, NMRA  
Module Committee  
Meeting Minutes  
April 19, 2023**

**1. Meeting:** 4/19/2023, 7:30 PM, Zoom.

**2. Skyboards/Facias**

- ~ Skyboards (backdrops) will be optional.
- ~ Skyboards will be 10" tall from deck of module.
- ~ Skyboards will be blue. Lloyd researched it, and will be: Behr "Life Force" P500-4 available as a stock color at Home Depot, sample size, quarts or gallons.
- ~ Facias will be semi-gloss black. Steve has researched and it will be: Sherwin Williams "Black Stone" HGSW3371, available at Lowes, \$6 for the sample can.

**3. Power Poles**

- ~ Will be bought in quantity to save money.
- ~ Free for the Division provided free modules.
- ~ Sold with slight markup (to recover some costs for Division) to non-free modules.

**4. Free Modules for New Members:** Yes.

**5. Module orders/count:**

- # 0 - HO singles
  - # 1 - HO double, 8 more to be cut
  - # 3 - N singles
  - # 2 - N Doubles
  - # 7 - N Misc. singles
- Module data base form has been developed.

**6. Rolling Command Stations:** Tabled.

**7. Division 1 Module fundraiser:** Tabled.

**8. Module Corners:**

- a. HO are cut and glued. Some track still needed.
- b. N scale track ordered. Super elevated Kato 20-185 and easement Kato 20-186.

**5. Clinics Schedule & Location:**

- a. May: TBD.
- b. June: TBD.

**6. Display Schedule:** November 4, 2023, Mt. Hope.

**7. Miscellaneous:** None.

**8. Adjournment:** 7:40 PM

Respectfully submitted,  
Jeff Stone, Clerk, Division 1.

# Achievement Program Report

## Author Certificate

This month I would like to examine the requirements for the Author Certificate.

Although the category title is Model Railroad Author, it probably should be called Model Railroad Media Specialist. All fields may be used to earn points.

To qualify for this certificate, you must:

1. Prepare and submit material on any of the following subjects:
  - \* Model Railroading
  - \* Prototype Railroading, Applicable to Modeling
  - \* NMRA Administration (e.g. Officers or Committee Reports)
2. Submit a completed Statement of Qualifications which shall include a list of all material claimed, giving the subject matter, name of the publication or place of presentation, the dates and the handouts. The number of points for each item must be shown.

The material being claimed must be the work of the author, photographer, artist, draftsman, etc. applying for the certificate. A total of forty-two (42) points must be earned from a combination of material in the following areas:

### A. Published Articles

Material that appears in published media, such as magazines or newsletter, may include text, photographs, drawings, tables, etc. All material that has been published or accepted for publication can be claimed. A copy of the published material or acceptance letter must be submitted as proof. Points are awarded regardless of size or number of features published. Points are awarded for text, photos, and drawings.

National publications receive the most points. NMRA Regional publications receive the second highest points, followed by Division publications receiving the smallest number. Points are awarded per full page. Credit may be claimed for partial pages down to quarter pages.

No more than half (21) points may be claimed for Division or NMRA Club publications.

### B. Live Clinics

A clinic is any live presentation given at conventions, division meetings, etc. In order to be eligible for credit, the clinic must be prepared and presented by the member applying for the certificate. It must be at least 30 minutes in length and it must include a handout (a copy of the handout must be included in the certificate application.)

A live clinic can only be claimed for the Author Certificate once, even if it is presented more than once. Additional presentations of a clinic earn credit towards Association Volunteer Certificate.

### C. Instructional Videotapes and Multi-Media

These are presentations that are specifically created by the member applying for the certificate using video tape or other multi-media. The production process will generally involve such things as preparing a shooting script or story board. Creating a close-up shot to illustrate the material, etc. Simply video taping a live clinic is not acceptable. If the presentation is not interactive, then it earns credit at the rate of 1/2 point per minute of the presentation. If the presentation is interactive, (requiring input from the viewer as it goes), then it earns credit as an "Electronic Publication." To earn credit for an Instructional Video Tape or Multi-Media Presentation, it must be submitted directly to the AP Executive Vice President for evaluation. Include his/her analysis and determination of credits with the Author certificate application.

### D. Electronic Publications

Material under this category is published on a public electronic forum, such as the Internet. This material earns credit at the same rate as Published Articles in region publications. All photos, drawings, etc. are treated as 1/3 of a page.

- \* Material that is published in more than one place or way can only earn credit once.
- \* The address (URL) of the material must be included with the certificate application. If the material is published on a non-public accessible forum (e.g. a private BBS), it is not eligible for credit.
- \* No more than half of the total required points (21) may be claimed for Electronic Publications.

### General:

- \* Final determination of what material is acceptable for credit, and how much credit it earns lies with the AP Department Executive Vice Manager.
- \* For all material that is the work of more than one person, each person may claim 1/2 of the applicable points, provided that they did at least 40% of the work involved.

From reading articles in the Peddler Freight over the last few years, I know that there are several Division 1 members who have accumulated points toward the Author Certificate. If interested, I would encourage them to fill out the form to see how many points they have earned.

Lloyd Horst  
AP Chair



# Division 1 T-TRAK News

By Lloyd Horst

## Module Base Color



Photo by Steve Zapytowski

Lowes in a 7.25 ounce sample size. This sample size should be enough for multiple modules.

The module wood base, legs, and any exposed foam must be painted. The Division 1 standard color is Sherwin Williams one coat satin enamel. The color is **Black Stone**, available at

## Skyboard Color



Skyboards must be painted front and back. The front of the skyboard must be a flat finish, while the rear must be a gloss finish. This can be achieved by the application of clear gloss over the flat skyboard color. The light blue flat paint standard for skyboards will ensure that all skyboards are the same color as defined below.

This is a Behr brand paint that is available from Home Depot. This paint is the base color of the skyboard, to which one could (if so desired), add clouds, landscape forms, etc. to match the module scenery.

## Skyboards

The Module Committee has decided to make skyboards optional. If you do elect to make a skyboard, it must follow T-TRAK standards.

The length of the skyboard should be approximately 1/8" less than the width of the module on which it is mounted. This is to prevent any alignment problems with the skyboard on the adjacent modules.

Anchor with 1/4 x 1" bolts, with flat washer and wing nut on the back, 1" in from each end and at the center of modules longer than single ones.

Above photos by Lloyd Horst

## Skyboard Construction Table

ITEM	T-TRAK STANDARD	DIVISION 1 RECOMMENDED
Skyboard Required	Optional	Optional
Height Above Module	457mm/18" max. Must be removable	254mm/10" from top of module base for N scale 305mm/12" from top of module base for HO scale
Top Corners	-	Rounded top corners 3/4" radius
Base Color	Blue	See Skyboard Color Figure 2

Table by Lloyd Horst

# Module Report

Looking back, the Module Group and the Division moved fairly quickly in embracing T-TRAK standards as a the Division's new module standard in both HO and N scale. As a result, some standards were not developed or written down. One of those is how to wire the module. Below is the standard for wiring modules to make them compatible with our power bus or the power bus at a convention.

## MCR Division 1 Module Wiring Standards

Division 1 will be using red, yellow, and white Powerpole housings on the modules with a Powerpole (PP) socket.

When using the Kato wiring product, 24-818, with the rail joiner attached and with the Kato plug, mark the wire where it is long enough to reach the PP socket hole with a little slack. At your mark, cut the wire. Then strip  $\frac{1}{2}$  inch of insulation off. Twist the two (2) blue ends together (photo 1) and insert into the PP 15 connector and crimp or solder the connection (photo 2). Repeat for the white wire.

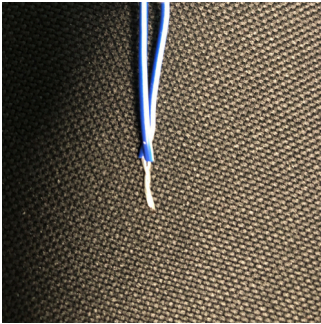


Photo 1

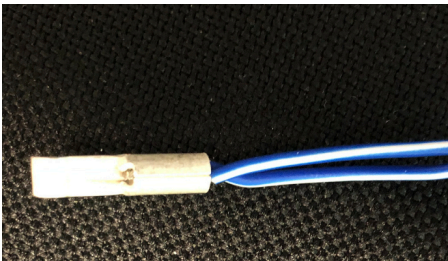


Photo 2

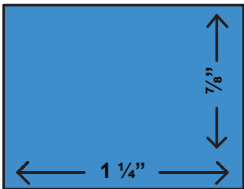


Figure 2

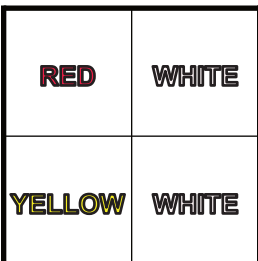


Figure 3

With the small size of the wire, a PP 15 connector will give a tighter connection. If using a PP 30 connector, take extra care in making sure you have a tight connection. Photo 2 shows what the finished

product should look like. This provides a PP connector for our power bus, but also a Kato plug for setups using Kato connectors.

The 3D printed PP socket requires a different size hole than the PP socket from other suppliers. Refer to Figure 2 for the correct hole size. The socket snaps into the hole. It is recommended to put a pin through the hole in the socket inside the module to hold it in place. It can also be fastened with glue.

Figure 3 shows the correct orientation the the Powerpole connectors in the socket. Kato blue wire will go into the Red or

the Yellow PP housing. Kato White will go into PP white housing.

Division 1 will provide the Red and Yellow Power Buses, as well as the pigtails that will connect from the Power Bus to the modules where needed. Division 1 will provide the Powerpole connectors and housings for track power and the the UP7 Loconet Panel for each corner module.

When all connections have been made, the wires should be neatly attached to the underside of the module top.

## Accessory Power

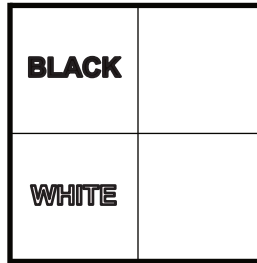


Figure 4

A 12 volt DC Accessory Power Buss will be available for switch machines, animation, lights, etc. Refer to Table 1 for the correct connectors and to Figure 4 for the orientation of the connectors. Division 1 will not provide the Powerpole connector for accessory power.

## Track Feeders

With DCC, more feeders are needed than for DC. Especially, as the layout becomes larger and more complex. For DCC controlled layouts it is recommended that all corner modules be equipped with track feeder cables. This ensures that no module is ever more than about 8 feet from a power feed, with most modules within 4 feet.

It is recommended that the following T-TRAK modules be equipped with track feeders:

- \* All corner and junction modules
- \* Modules with track sections between two turnouts with insulated UniJoiners at the four frog rails of the turnouts (e.g. a passing siding).
- \* Modules with DCC stationary decoders to operate turnouts should also have their own track feeders or, as a minimum be located directly besides a module with track feeders.
- \* Other modules with specific needs for track power feeders.

## T-TRAK Electrical Standards & Recommended Practices

ITEM	T-TRAK STANDARD	DIVISION 1 STANDARD
Connector	Kato Compatible	Anderson Powerpole
Number of Modules with Power Feed	DC - every 30 feet	DCC - every 8 feet maximum. All corner and junction modules must have track feeders. Modules with DCC accessory decoders powered from the track. Others as necessary.
Track Power Bus Connector	No Standard	30A Anderson Powerpole Horizontal Order: Red-White Yellow-White
Module Track Feeder Color Code	Blue-White-White-Blue	Red-White; Yellow-White Horizontal order: Red-White Yellow-White
Track Feeder	No Standard	Anderson 15A Powerpole Red-White Yellow-White with Kato Tamiya pigtail.
Track Bus	No Standard	12 gauge with Powerpole connectors. 2', 4' and 8' Long Track Bus cables. 8" Track Bus Feeder sections with 2 Power Pole pigtails. One or two track buses as required by layout configuration.
Accessory Power Bus	No Standard	12-gauge with Powerpole connectors, Black-White. 2', 4', and 8' long Accessory Bus. 8" Accessory Bus Feeder sections with 2 Black-White Powerpole pigtails. One or two buses per layout. Vertical order: White Black

Table 1 by Lloyd Horst

Lloyd Horst  
Module Chair  
*All photos, figures and tables by Lloyd Horst*



## Membership Report

Well, I am back from vacation and excited to get back into the hobby. As soon as I send this short report off, I will continue to dust off the layout for the next op session on the LS&MJ. My vacation was great including riding trains so conveniently through some very interesting landscape. But unfortunately while gone NMRA headquarters reported we dropped to 77 members as of March.

Once again, URGENT! Do you have any photos we could use on our promotional display? Please pass them to me at the meeting or send them through the mail if you prefer. I found no envelopes with your photos upon return! C'mon guys. Surely you can part with one or two photos for our display board! Thanks.

Jim Peters  
Membership Chair

## N Scale Report

At a past Division meeting Bruce asked what I had used to paint the top of my T-TRAK Module. I used the following spray paints:

- Testors CreateFX, Dirt #79600
- Testors CreateFX, Moss Green #79604
- KRYLON Ultra-Flat, Sand #4295
- KRYLON Ultra-Flat, Khaki #4291
- KRYLON Ultra-Flat, Black #4290

These spray colors are usually used by hunters to camouflage equipment.

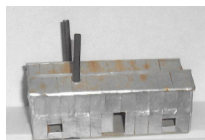
Sixteen different Super Dome Cars were available like the Napa Valley Super Dome Car shown below.

These N scale cars are eight inches long and include internal battery lighting controlled by a magnetic wand. As usual passengers are not included. There were only 55 Napa Valley and also a limited number of George Bush 41 Super Domes. I purchased a Milwaukee Road Hiawatha Unit and there were only two left. Other units are Chicago & Western, Holland American West Tours, Via Rail, Great Northern 'Cascade Green' and 'Big Sky Blue', two different Amtrak paint schemes, and seven others from Intermountain.

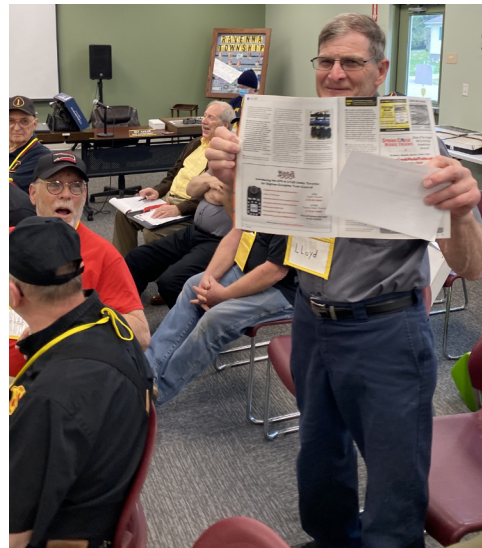
I still have concerns about the size of the curve on T-TRAK modules when the 8" dome is added to existing Hiawatha.

Pictured (below right) is a building I picked up at an estate sale. You find some real treasures there. This may be added to T-TRAK Module, although it may be a dairy or loading docks. Decisions! Decisions!

Don Bonk  
N Scale Modules Chair



## Bring and Brag



Lloyd Horst displays a page from the 'Ask MR' column in the May Model Railroader magazine. He wrote to ask advice on an electrical problem with one of his N scale locomotives.



Bob Ashley, Jr. Displays a chassis mount he 3-D printed. He had free ones for those who wanted them.



Jim Peters displays the Powerwerx chassis mount on the back of his T-TRAK N scale single module.

# Model Railroading Thoughts



Before and after; a new beginning; tabula rasa, whatever you call it, the easy part is done and know the renewal begins. At left is the picture from last month showing the beginning of the removal of the heavy screen and plaster mountain from my 3' x 6' N scale layout. At right is the same view with the mountain gone and the plywood seeing light for the first time in 40 plus years.

Now what? Matt Woods, an artist at scenery, suggested I keep the trackwork the same and convert the layout to a narrow gauge railroad, HO<sub>n</sub>30 if I remember correctly. Interesting thought, I even bought the latest copy of *Narrow Gauge and Short Line Gazette*.

But I've always liked the layout, the "Scenic & Relaxed," a cookie-cutter plan taken from the Atlas book *Nine N Scale Railroads*. My late father assembled the plywood and put on the original track. Over the years I've completed the scenery, and replaced turnouts and most of the track.

So N it will stay! Same track plan, a few new turnouts, new ballast, and probably wired for DCC to compliment the old block system DC. And with a mountain made of foam, it has to be easier to move in and out of the basement.

But the screen showing in the lower right of each photo will stay, for the same reason I never covered it with the masonite fascia in the first place. At shows people would ask how I made the scenery and I would show them that little piece of screen embedded with plaster. And a conversation would start. Now I'll leave a little piece of extruded foam visible, and then I'll get to explain old vs. new and a new conversation will begin.

Bruce Hukill  
PF Editor



If you have an HO or N scale T-TRAK module, or modules, please complete the below form and return to a T-TRAK committee member at the next meeting. If you have already completed a form, thank you.

## Div. 1 T-TRAK Module Registration (HO/N)

Name \_\_\_\_\_

Module(s) (example) #2 HO singles, #1 HO double

Address \_\_\_\_\_

Module(s) \_\_\_\_\_

City, Zip \_\_\_\_\_

\_\_\_\_\_

Email \_\_\_\_\_

\_\_\_\_\_

Phone \_\_\_\_\_

Description(s): (example) The 2 HO singles should be paired together or with (another member's name) - scenery is a lumber mill with a short siding, the HO double is a rural one room schoolhouse with playground and corn field surrounding - no siding.

Description(s): \_\_\_\_\_

\_\_\_\_\_

\_\_\_\_\_

\_\_\_\_\_

\_\_\_\_\_



# Division 1 April Clinics

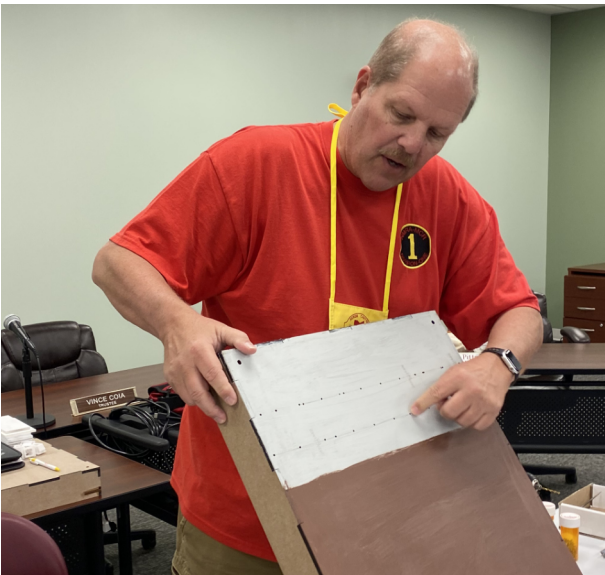


(above) Jeff Stone (in red shirt) demonstrates how he attaches HO track from the bottom with screws. Jeff provided all supplies needed for any member who wanted to attach their track.

(right) Sam Eisele displays some of his HO scale trash bins he weathered. He walked members through his methods for a quick weathering project.

(below right) Division 1 members watch as Sam turns a shiny new plastic model into a used and abused rusted and dented trash bin.

(below) Jeff Stone points to the holes on top of an HO T-TRAK single. He taps the bottom mounting holes on Kato track and then uses machine screws to attach the track. This method allows track to easily be removed if needed. Jeff will bring supplies to May's meeting for anyone needing them.





# THIS MONTH'S MEETING

Sunday, May 21, 2023  
Ravenna Township Meeting Room  
6145 Spring Street  
Ravenna, OH 44266

Bring your modules! It does not matter how complete or incomplete. Lloyd Horst and Bob Ashley, Jr. will present a clinic on installing the free Anderson Powerpole connectors to your modules. Jeff Stone will bring supplies for attaching track in case you missed last month.

2 PM

11<sup>th</sup> Year



**MICHAEL L. BRADLEY**  
LUTCF, CISR

---

**BRADLEY INSURANCE AGENCY**

---

[WWW.MBRADLEY.COM](http://WWW.MBRADLEY.COM)

851 W. Main St.  
Ravenna, OH 44266  
Email: michael@mbradley.com

Phone: (330) 296-7622  
Fax: (330) 296-7672

11<sup>th</sup> Year

**Carol Ann Bonk, ABR, GRI**  
REALTOR®

Cell: 330-936-9752  
Fax: 330-875-1179  
CarolAnnBonk@kw.com



**KELLER WILLIAMS**  
LEGACY GROUP REALTY

4580 Stephen Circle, N.W., Suite 100, Canton, OH 44718

Need a train room?  
Call me! (330) 936-9752

**BONK - RR**  
Bankers of Ohio  
and Northern  
Kentucky Railroad



**N-Scale**  
VISITOR'S PASS

Donald and Carol Ann Bonk  
Louisville, Ohio 44641


7345 Hahn Street  
330-875-4567

**THE TILLAMOOK & ASTORIA**  
RAILROAD COMPANY



Steve Zapytowski, MMR 612  
Division 1, MCR, NMRA  
330-678-4583  
szapytowski@neo.rr.com  
www.div1-mcr-nmra.org/steve-zapytowski


Northwestern Oregon Circa 1912 — HO and HO<sub>n</sub>3



**PYA**

Pittsburgh, Youngstown & Ashtabula Railroad  
[www.pyamodelrailroad.com](http://www.pyamodelrailroad.com)

Jim DiPaola  
3201 Summit Road, Ravenna, OH 44266-9018  
330-577-6052  
Chief1RTFD@aol.com



**DAVIES STEEL**

**LS & MJ Railroad**  
Little Scioto & Mingo Junction



216.402.8507

**Jim Peters**  
Interested in operation send email:  
jpeters711@yahoo.com

# Train Shows and Open Houses

## Rails to Pittsburgh MCR Regional Convention - May 4 - 7

Doubletree by Hilton,  
910 Sheraton Drive,  
Mars, PA 16046  
[www.RailsToPittsburgh.com](http://www.RailsToPittsburgh.com)

## Model Train Day & Flea Market - May 20

Painesville Railroad Museum  
475 Railroad St., Painesville, OH 44077  
Admission \$5.00 10 AM - 3 PM

## NE Ohio Large Scale Train Show - June 3

Warren SCOPE (YMCA)  
375 North Park Ave., Warren, OH 44481  
Admission \$5.00

## Boy Scout Day - RR Merit Badge - June 3

Painesville Railroad Museum  
475 Railroad St., Painesville, OH 44077  
Admission \$25.00 10 AM - 4 PM

## History of Cleveland, Painesville - June 4 and Eastern Interurban

Painesville Railroad Museum  
475 Railroad St., Painesville, OH 44077  
Admission: Free, Donation accepted 2 PM

## National N Scale Convention - June 14 - 18

Nugget Casino Resort  
1100 Nugget Avenue  
Sparks, Nevada 89431  
<https://www.nationalscaleconvention.com>

## Model Train Flea Market - June 24

Painesville Railroad Museum  
475 Railroad St., Painesville, OH 44077  
Admission \$5.00 10 AM - 3 PM

## Hobo Day, Model Train Flea Market - July 29

Painesville Railroad Museum  
475 Railroad St., Painesville, OH 44077  
Admission: Free, Donation accepted 10 AM - 3 PM

## NMRA National Convention - Aug. 20 - 26

Gaylord Texan Resort & Convention Center  
1501 Gaylord Trail  
Grapevine, TX 76051  
<https://www.2023texasexpress.com>

## Everett's Train Show & Swap Meet - Aug. 19

Marion Union Station  
532 West Center St., Marion, OH  
Admission: Free, Donation accepted 10 AM - 4 PM

---

## PEDDLER FREIGHT SUBSCRIPTION FORM

Division 1 has moved to email publishing of the Peddler Freight. There is no cost for the email Peddler Freight. However, if you want to receive the Peddler Freight by regular mail, Division 1 requests that you subscribe in order to support the cost of printing and mailing. Under current rules, you will NOT be denied a copy of the Peddler Freight if you do not subscribe, but your support for Division 1 would be appreciated.

SUBSCRIPTION COST: \$5.00 for the publishing year September, 2022 through June, 2023. Make checks payable to: Division 1 - MCR - NMRA

Mail to: Bruce Hukill, editor  
901 Wicket Dr.  
Akron, OH 44307

Name \_\_\_\_\_

Address \_\_\_\_\_

PIKE AD: \$5

City \_\_\_\_\_ Zip \_\_\_\_\_

EMAIL SUBSCRIPTION (Free)

Email \_\_\_\_\_

Subscription preference: Mail \_\_\_\_\_ Email \_\_\_\_\_

**PEDDLER FREIGHT**

901 Wicket Drive  
Akron, OH 44307

Publication of Division 1 - MCR - NMRA  
The Akron, Canton, Youngstown Division

First Class

**Division 1 Officers**

Superintendent	- Jim DiPaola	330-297-5571
Asst. Supt.	- Sam Eisele	330-322-3487
Treasurer	- Michael Bradley	330-325-7622

**Division 1 Appointees**

Clerk	- Jeff Stone	330-356-0486
PF Editor	- Bruce Hukill	330-571-4037

**Division 1 Volunteer Positions**

Achievement Program	- Lloyd Horst	330-465-7402
Apparel	- OPEN	
Christmas Dinner	- Randy Dettmer	330-653-3537
Clinics	- Jim DiPaola	330-297-5571
Exhibitions	- Matt Woods	330-465-8724
	- Lloyd Horst	330-465-7402
Membership	- Jim Peters	216-402-8507
Modules:		
HO/Chair	- Lloyd Horst	330-465-7402
NTRAK/T-TRAK	- Don Bonk	330-418-6860
Roster	- OPEN	
Webmaster	- Steve Zapytowski	330-715-3444

**Who to contact in Division 1 and the NMRA**

**Mid-Central Region**  
President - Dave Neff  
Email: [mcprez@nmra.org](mailto:mcprez@nmra.org)

**National Model Railroad Association**  
President - Gordon Robinson  
Email: [president@nmra.org](mailto:president@nmra.org)

The **Peddler Freight** is published each month September through November and January through June. Opinions expressed in this issue may not represent the opinions of the Peddler Freight Editor, Division 1, MCR or the NMRA.

