



PEDDLER FREIGHT

Divison 1 - MCR -NMRA

Akron - Canton - Youngstown Division

Serving Carroll, Columbiana, Harrison, Mahoning, Portage, Stark,
Summit, Trumbull, Tuscarawas and Wayne Counties

www.div1-mcr-nmra.org

Volume 24 - Issue 2

October 2016

Superintendent's Bulletin



So you'd like to assemble a laser kit but haven't because it looks a bit intimidating? You've even gone as far as purchasing a laser kit and opened the box and said, "How do I get all those pieces to look like the picture on the box?" Fear not Division 1 members, help is available from Gary Kohler owner of Portland Locomotive Works.

Gary is hosting our October Event at his production facility in Greenford, OH. For \$20.00 he will provide a section house kit (see photo below), a tube of *IC-GEL* super glue and his expertise to help you assemble the kit. We are very fortunate to have Portland Locomotive



Works in our Division so come have some fun and take home a nice laser kit.

Those of you who were at our September Event heard Gary speak about incorporating our flea market

into his Midwest Narrow Gauge Show, March 16-18, 2017. This is a great opportunity to expand our flea market and for the module group to display. We will need to provide some members to help at the show and in return those volunteers will get free admission. More details to come. *Caboose Hobbies* in Denver, CO which closed on September 11, 2016 recently announced they will still be around but only do internet sales. Current pre-orders & back orders will be processed by the owners. Please check out their web site www.cabooseshobbies.com for details.

This month signals the start of train show season with the first local show being the "Great Berea Train Show" at the Cuyahoga County Fairgrounds hosted by Division 4. Time to look for those hard to find "gotta" have items.

The October contest is passenger or freight stations. Remember Bring and Brag. If you built something after seeing Sam Eisele's clinic at our September Event bring that along to show. See you at the October Event.

All Aboard!!

Jim DiPaola, Superintendent
NMRA, MCR, Div 1

Clinic Report

Thanks for the great start of the model railroading season go out to Sam Eisele! I have allocated an organizer to my work bench that has been getting little attention and already collected many future vents (tiny round batteries)! My goal is to add something to my industrial interior scene daily...ok..it is my goal, not reality yet. We shall see! Thanks again, Sam

Sam's Hands-On clinic may have been more traditional in some respects, but I still feel it was a great success. If nothing else, guys got their materials together, collected a few ideas, and will definitely be entering what they do in our additional contest in October! Good luck.

Talking about October, Gary Kohler will be giving another Hands-On clinic. We will be building a dual hand car shed. The cost includes the kit and a tube of *IC-GEL*. Bring your own tools: Exacto knife, small piece of sandpaper and a file for cleaning the edges of parts. Unfortunately, money to reserve a kit has passed. I do not know if there will be any extra kits.

November: Module Building by Bob Ashley, Sr.
Jim Peters
Clinician Chair

2016 - 2017 Division 1 Meetings

October 16 - Portland Locomotive Works
November - Sam Eisele
December 3 - Holiday Banquet, Pufferbelly Rest., 12 Noon
January - TBA
February - TBA
March 19- TBA
April 23 - Rob's Trains
May 21 - Mike Bradley
June 18 - Jim DiPaola

Bring-N-Brag

Division 1 is starting a Bring-N-Brag with the September 18 meeting. All members are welcome to bring a model they've built or are working on presently. They should be able to give a short (5 minutes or less) talk to describe their item or project. Members may also place a "Help Wanted" ad in the Peddler Freight. Need help with wiring, water or weathering that new loco? Someone in the division might be able and willing to help you out.

Achievement Program

Just a reminder that I serve the division as the AP chair. If you have any questions, please contact me. Thanks,

Jim Peters, AP Chair

Layout Tours

The Second Annual Layout Tour is tentatively scheduled in March, 2017.

Thanks,

Jim Peters, Layout Tour Chair



Tales of a Shay: From Wreck to Reincarnation Part 13: The Return of Shay #6 – Plumbing... Steve Zapytowski

As many of you know I was compelled to take a break of several months from work on this project due to issues with my left hand. Now, having recovered fully, work has resumed on Shay #6. Picking up where I left off more boiler details are added for this installment. Using Dykem to color the boiler I scribed the locations of the various “plumbing” fixtures required by a typical Shay locomotive. (Figure 131)

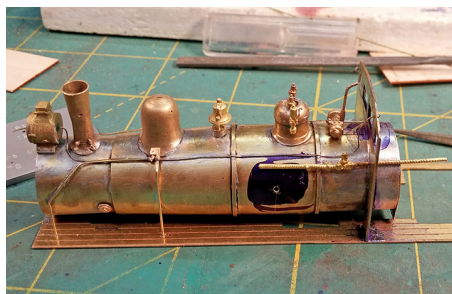


Figure 131: On the left side I first marked and drilled the hole (#69 drill) needed for the pump governor with its lagged pipe. (Cary #13-221) The pipe on the right side of the governor extends through the front wall of the cab. The hole drilled in the middle of the blue dyed area is for the air pump.



Figure 133: The Worthington air pump (Cary # 13-667) was soldered to the boiler from the inside. The pump, fortunately, covers the end to end solder joint between the injector and the check valve.

The injector was then installed below the governor with attachments to the floor boards of the deck and the front cab wall. The check valve was mounted beneath the sand dome and connected to the injector with a short length of .032” brass rod. (Figure 132)

Next I soldered a Worthington air pump over the injector piping. The pin on the pack of the pump required a #57 drill bit. I soldered the pump to the boiler from the inside using Rickety Rails detail solder which melts at 145° C (293° F). Previous boiler details were attached using solders with higher melting points. As work progresses solders with lower melting temperatures will be used to, hopefully, prevent earlier work from becoming detached. (Figure 133) The feed pipe on the right side injector was too short and had to be lengthened. To this end I made a pipe coupler out of a length of 1/16” brass tube. (Figure 134)

A full length of 1/16” brass tube was soldered to the check valve pipe with a silver bearing solder (melting point 183° C, 361° F) and only then was the tube cut to length. It is much easier to handle two larger parts as opposed to

a large part and a tiny part. (Figure 135) This strategy of using sacrificial material is one I commonly employ when scratch building models. Once soldered the 1/16” tube was cut to length. I cleaned up the open end and soldered a length of .032” brass rod into it. (Figure 136) (Con’t on page 4)

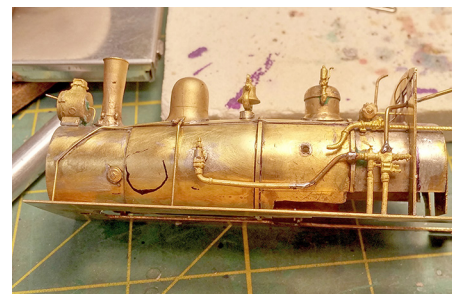


Figure 132: Here the pipe from the governor is bent to line up with the steam input on the yet to be placed air pump. The lifting type injector (Cary # 13-203) uses steam to create a vacuum which lifts water from the tender and pushes it toward the boiler. The check valve (Cary #13-209-L) mounted beneath the sand dome allows water to flow forward into the boiler, but not backwards towards the tender.



Figure 134: Here the end of a piece of 1/16” brass tube is being drilled out with a #65 drill. It was only drilled far enough to create a secure seat for the pipe from the right side check valve.



Figure 135: The full length of 1/16" brass tube and the right side check valve were pinned in place before soldering. The second half of the coupler joint was made with Rickety Rails detail solder.

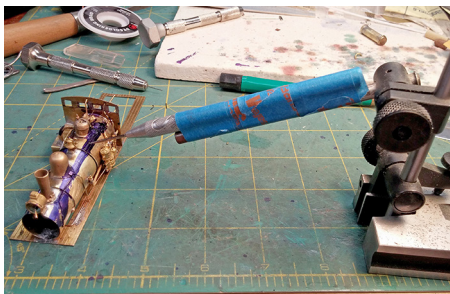


Figure 137: The horizontal center lines for the hand rail stanchions were marked on the boiler using a surface gauge. (Micro-Mark #60520)



Figure 139: Shown is a length of poplar dowel chucked in my drill press. Below it is the 1/4" brass tube that will become the body of the tank. My sanding block, on the left was made by gluing two pieces of birch plywood together and then I glued a piece of 150 grit sand paper to the face of the larger block. Franklin Tightbond II was used in both cases.



Figure 141: The length of the .015 x .042 brass strips was determined to be .785" by using the formula $Circumference = \pi d$. The strips were measured and marked using a micrometer as described in an earlier installment of this series.

The heights of the hand rail stanchions above the locomotive's deck were measured from the old #6 Shay. One height is needed for the rear portion of the boiler, while the second height is for stanchions on the smoke box. (Fig. 137) The vertical center lines for each stanchion location were measured from the front wall of the cab and transferred to the new boiler using a pair of dividers. The center point of each stanchion was marked by using a scribe to slightly dimple the brass of the boiler. Only a very small dimple is needed as this will easily hold the point of a #79 drill bit in place while the hole is started. These pilot holes were enlarged in two steps up to a finished diameter 0.0350" ending with a #65 drill bit. (Fig. 138) There are two stanchions that will be mounted on the sand dome, but I will do this later as there are some details which must be applied to that dome first. Continuing, I ran a pipe (.020 brass rod) from the output of the air pump to a point under the smoke box. This is the feed line for the air reservoir which will be the next part of my model. I measured length of the tank on the original model and cut piece of 1/4" brass tube to match its length. The reservoir I wanted to make is a welded convex flush end tank so my next task was to create the tank ends. I started with a piece of 1/4" poplar dowel, which naturally had too large of a diameter to slip into the end of the 1/4" brass tube. Not owning a lathe of any kind, I chucked a short length of the dowel in my drill press and used a homemade sanding block to turn the dowel down to a diameter that would slide into the tube. (Fig. 139) Once it was the right diameter I used the sanding block to round the end of the dowel while it was still in the drill press. (Fig. 140)

I used the left over dowel to hold the 1/4" brass tube in a vice. Strips of .015" x .042" brass were formed around the tube and soldered near the ends. (Fig. 141) The rounded bits of dowel were then pushed into the ends of the tube. The area between the edges of the dowel and the tube were sprinkled with small amounts of Lightning before applying another drop of Dr. Mike's. (Fig. 142)

(right) Figure 142: Lightning is a filler made for use with CA glues. It can be used to fill holes and cracks. In this case I used it to seal the edge of the dowel against the brass tube. Once the CA glue has cured lightning can be sanded and drilled.

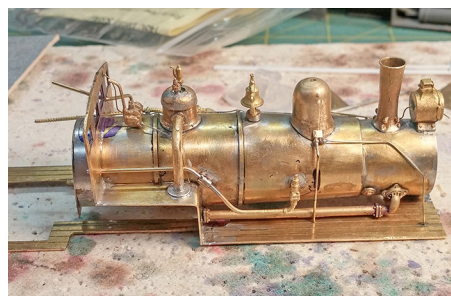


Figure 136: Here the check valve assembly is shown bent into the required shape. The check valve (Cary #13-199 R) is soldered to the boiler while the .032" brass rod is soldered through the cab front. The pipe "coupling" will remain in plain sight on the finished model.

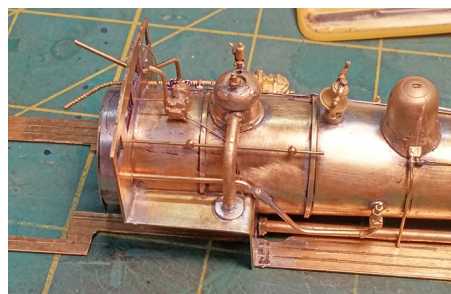


Figure 138: The hand rail stanchions (Cary #13-118) were soldered in place using Rickety Rails detail solder. A length of .020" brass rod was slipped through the stanchion's holes the keep them properly aligned while soldering. This piece of brass rod will be used later to mark the rod's center on the cab front for drilling later.



Figure 140: Two pieces of dowel are shown with their ends rounded. The end grain on the rounded surface was very porous looking (shown on the right) so I put a drop of Dr. Mike's Model-n' Crafter's Glue on the end. This wicked right into the wood grain sealing and filling it nicely. In a few minutes I used a piece of 800 grit sand paper to smooth the rounded end of the left dowel.



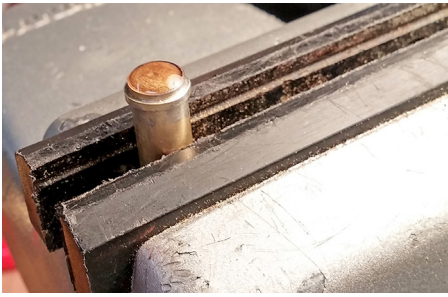


Figure 143: The surface tension of Dr. Mike's forms a convex shape over the end of the tank. This is a single drop carefully applied. It cured fully in less than an hour and then I applied a second drop to build up more thickness on the convex surface. Be very careful in an operation like this or you may end up with a CA glue sculpture fused to your vise and workbench.

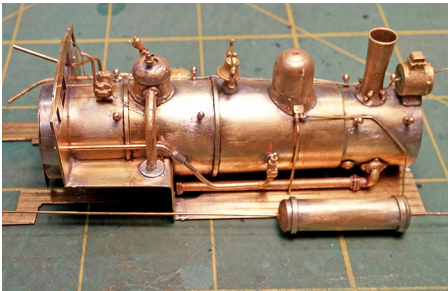


Figure 145: The right side of the new Shay #6 at the current stage of its construction. In front of it is the new air reservoir with the .020" brass rods inserted into its ends.

To finish the convex ends of the tank I put it into a vise and carefully applied a single drop of Dr. Mike's onto the tank's ends. If you are not familiar with Dr. Mike's it is an extremely thin adhesive designed to wick into porous materials such as wood, papers, and cardboards. As the end of the dowel was already sealed twice there was no place for the adhesive to wick into. Thus, the surface tension of the liquid formed a convex bubble over the end of the tank. (Figure 143) I used two applications of glue on each end and the sanded the fully cured glue with 800 grit sand paper to aid in the adhesion of the eventual coat of primer that will be applied.

Next, I filed flats on the bands that were previously soldered to the tank. These are to keep the assembly from rolling when I attach it to the locomotive's deck. (Figure 144) Holes were drilled in the center of each tank end for the piping that will connect it with the air pump and the locomotive's cab. The hole centers were located using a center square (Micro-Mark #82285) and a metal scribe. The holes were piloted with a #80 drill before being drilled to their finished size with a #75 drill. A short length of .020" brass rod was glued into each end of tank using gel type CA glue. (Figure 145)

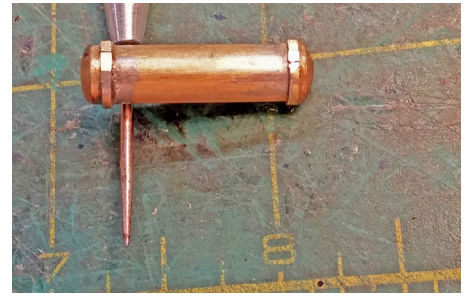


Figure 144: I filed flats onto the tank's straps and did this over the joints in the tank's bands. This will help insure that those joints face down when I attach the tank to the locomotive's deck.

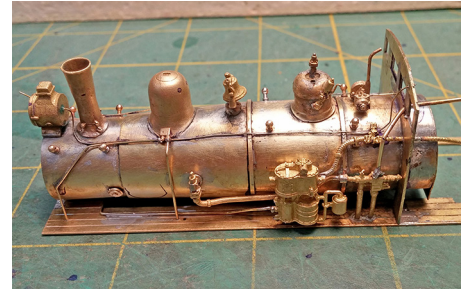


Figure 146: Shown is the present condition of the left side of my new Shay #6's boiler. The pipe leading from the air pump to the air reservoir can be seen in this photo.

Next month will see the completion of outer boiler details and the detailing of the boiler's backhead. To be continued...

Division 1, MCR, NMRA Minutes September 18, 2016, hosted by Bob Ashley Jr – Green, OH

- I. **Welcome:** The event was called to order at 2:00 PM. Superintendent Jim DiPaola thanked Bob for hosting the meeting. This event contest is loaded flat cars and next month is a freight or passenger depot.
 - II. **Minutes:** A motion was made to accept the minutes of the June meeting as published in the September Peddler Freight by Loydd Horst, seconded by Don Bonk. The motion passed.
 - III. Jim DiPaola announced that the division needs a clerk.
 - IV. **Treasurer:** Report given by Mike Bradley of account status and current project inventory. Motion was made to accept the report subject to audit, by Joe Urbanski and seconded by David Hazlett. Motion carried.
 - V. **AP/Clinics:** Jim Peters is available for any questions in regards to obtaining an AP certificate. Today's clinic is about industrial interiors presented by Sam Eisele. Next month will be another hands on clinic at the Portland Locomotive Works hosted by Gary Kohler. We will be constructing a section house. Cost for the kit with glue will be \$20 and Steve Zapytowski will need to receive reservations by 9/30/2016. A new projector and screen has been purchased for the division.
 - VI. **Contest Awards:** David Hazlett distributed awards to those participants that were not present at the June meeting.
 - VII. **Apparel:** Jim Williams has sweat shirts available now.
 - VIII. **Membership:** Larry Brown announced that we have 108 members.
 - IX. **Modules:** Bob Ashley Sr announced that you can view the division modules in action at the National Train Show at the past NMRA convention on YouTube under 2016 NTS. No Dalton show this fall or spring. Jim Pope with the YMRRC approached Bob about a possible new venue in Salem, OH. Details are still being worked out.
 - X. 2016 Flea Market: Bob Ashley Jr announced that we have sold 11 tables and have 11 open. We need more flyers printed to distribute to the fall shows.
 - XI. 2017 Show collaboration with Portland Locomotive Works: Gary Kohler has invited the division to join his scale show. This would give us an opportunity to show off our modules and have another flea market. The dates for this would be March 16-18, 2017. A motion was made to join Gary's show by Joe Urbanski and seconded by Don Bonk. The motion passed.
 - XII. 2019 MRC Convention: The division has been asked by the MCR board to entertain the idea of putting on a regional convention. A venue needs to be determined. Jim DiPaola and Steve Zapytowski agreed to be the co-chairmen of the event. A motion to accept putting on a convention was made by Bob Ashley Jr and seconded by Joe Urbanski. The motion passed and Sam Eisele volunteered to handle the banquet.
 - XIII. Nils Sundberg of Rob's Trains is not doing well. A card was sent around to be signed. Rob Sundberg asked that members that have locomotives or other items at the shop to be repaired to please come and pick them up.
 - XIV. Sam Eisele won the 50/50 raffle and donated his winnings to the module fund.
 - XV. Kurt Sanders has old Model Railroader magazines that he would like to give away.
 - XVI. Bruce Hukill announced that the article due date for the October PF is 9/28.
- Ray Lora made a motion to adjourn the meeting, seconded by Don Bonk, motion passed; 3:15PM.
Total attendance was 29.

N SCALE NEWS

Micro-Trains September News – Announced 27 currently available or future N/Z products last month. Four items caught my eye. Lake Erie, Franklin, and Clarion 50' box cars are available in both N and Z. Small PRR 39' three dome tank car is available in N and a four pack of BCR 39' single dome cars in Z. There was also a creepy Halloween Train Set available in mid-September for those who collect such items.

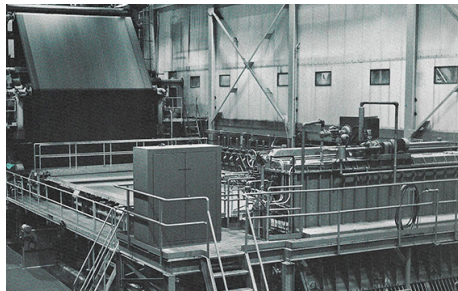
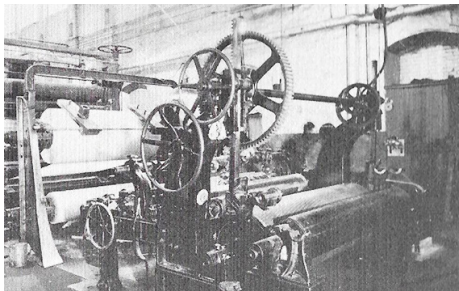
Bachmann 765 Berkshire - We reported on it a couple of months ago; now an update. I recently put together a 5' long train, engine/tender, 10 various style coal hoppers, 1 tank car, 4-40' box cars including an Aztec Track Cleaning unit and caboose. This train ran well in both forward and reverse directions through turnouts with "no-slip," regardless of the extra drag from the Aztec car in the middle of the train. On level tracks this engine should be able to haul another 10 cars.

Bluford ACY 30 Ton Hoppers – Some of us have ordered the 30 ton ACY hoppers which were to be available in September but, according to Nils at Rob's Trains Bluford meant "Septoctober" or "Septonovember."

Why not a Pulp and Paper Mill Part 4 – This month's photos include 2 paper machines, an old unit and a modern one. A paper machine is a rolling mill. The length of the mill is determined by age of machine, type, width, weight and grade of the paper being produced. A machine making printer paper would be short by comparison to a machine making coated card stock for paper milk cartons. In 1969 I saw circa 1940 machines making card stock that was a football field long or better. So in modeling a mill its length can be sized to your space, but in "N" a 12" long building would be a good start. The early mill is shown at the tail end of the machine where finished rolls of paper are taken off the unit. The modern machine produces a lightweight paper product. It is 214" wide (~18') and paper travels at 2,500' per minute. This machine is shown from the head end starting with the stock slurry box which distributes paper fiber onto the first set of screens in the Fournier which shakes the pulp to force fiber crossway to the machine direction to increase paper strength. The pulp sheet from the Fournier passes on to the machine's screen and runs upward and then drops and passes through the rolls to be pressed, dried and collected at the tail end of the machine. The paper being formed on this machine is a brown stock probably for bag production. The final photo this month is of a warehouse full of rolls of tar paper.

Ramblings - NMRA has reached 1984 where a meeting is an event, but like A Rose by any other name is still a Rose. A meeting is still a meeting.

Don Bonk, NTrak Modules Chair



PEDDLER FREIGHT SUBSCRIPTION FORM

Division 1 has moved to email publishing of the Peddler Freight. There is no cost for the email Peddler Freight. However, if you want to receive the Peddler Freight by regular mail, Division 1 requests that you subscribe in order to support the cost of printing and mailing. Under current rules, you will NOT be denied a copy of the Peddler Freight if you do not subscribe, but your support for Division 1 would be appreciated.

SUBSCRIPTION COST: \$20 for the publishing year September, 2016 through June, 2017.

Make checks payable to: Division 1 - MCR - NMRA

Mail to: Bruce Hukill, editor
1304 Ada St.
Akron, OH 44306

Name _____

Address _____

PIKE AD: \$5

City _____ Zip _____

EMAIL SUBSCRIPTION (Free)

Email _____

Subscription preference: Mail _____ Email _____



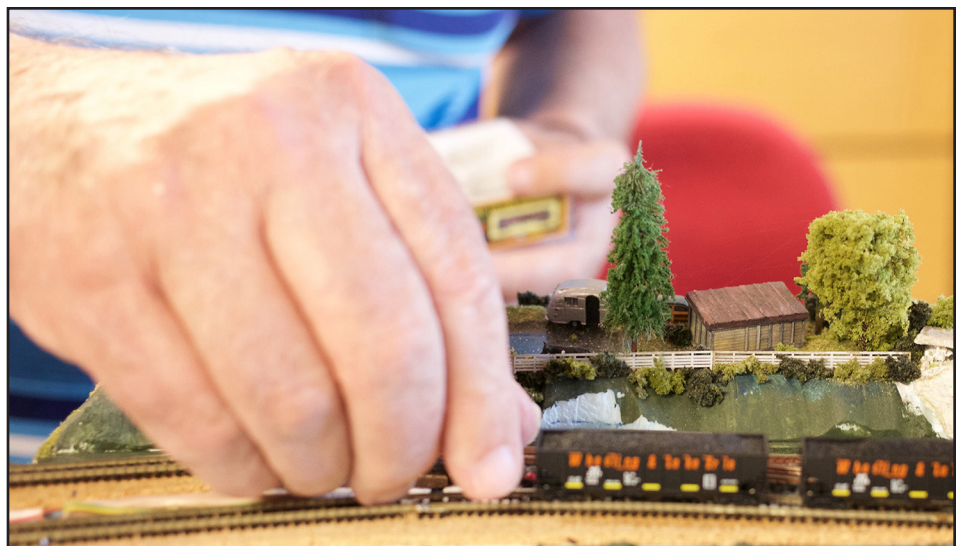
a sample of Di



Don Avila

Division 1 member Don Avila has modeled in z scale for 17 -18 years. His present 4 ft. by 8 ft. custom designed layout was originally drawn up for n scale in 1978 by the famous John Armstrong. With some minor changes Don converted the plan to z scale which allowed for more scenery without changing the overall footprint. Don's favorite aspects of the hobby are laser kits and detailed scenery.

Don Avila's *Carlsbad, East Portal* & John Armstrong custom designed layout packs a lot of z scale



Div. 1 layouts


& Zenith Railway scale into 32 square feet



Back in the summer of 1978, Division 1 member Don Avila commissioned the late John Armstrong to design a standard four by eight in n scale. Total cost - \$154.10. Not bad in today's dollars, but remember this was almost 40 years ago. Fast forward to 2016. The layout now sports z scale trains manufactured by Micro-Trains, American Z Line (AZL) and Marklin running on DCC with operating ditchlights.

The original design not only called for n scale, but also a unique "railroad in suspension," according to an article in the April, 1982 issue of *Model Railroader*. This was to allow the CEP & Z to be put "up against the ceiling between operating and building sessions but accessible from all sides when in the lowered position." The layout was also featured in the 1995 *Model Railroad Planning*.

A major part of the hobby that Don and his wife Judy enjoy is attending NMRA conventions and meeting up with friends while running trains on the award winning *Golden Blawhawk & Central City* z scale layout.



JOHN H. ARMSTRONG
10214 SOUTHMOOR DRIVE, SILVER SPRING, MARYLAND
File No. 43-11A 20901

To: DONALD F. AVILA
P.O. Box 217
GREENSBURG, OHIO 44232

Date: 10/8/78

"STEP 4" MEMORANDUM:
Your custom railroad plan package has been completed!
The charge, based on the actual net area of the railroad as measured from the final plan, is as follows:

Base charge	12.50
Area charge <u>30</u> sq. ft.	22.40
(<u>1/4</u> gauge @ <u>20</u> / sq. ft.)	6.70
Complete contouring of scenery (50 % of area charge)	
Construction-by-stages charge, if applicable	
Total, actual area basis	154.10
Previously paid (thank you!)	79.00
Balance	79.10

☐ Preliminary print herewith; complete package will be forwarded upon receipt of balance above.
☒ Package herewith, 90 % of estimate having been remitted previously; please remit any balance shown above.

Remarks or exceptions:
Since this job has been delayed more than it should have been, I'm sending the whole package now, without waiting for the balance due.

John H. Armstrong 10/14/78



Two scratchbuilt bridges and detailed scenery showcase Don's favorite parts of the hobby. (clockwise from left) Don shows how he makes liftout sections of scenery above hidden track. The tiny size of z scale is evident as Don places hopper cars on his layout in front of a highly detailed camping scene. Don places a covered hopper without the benefit of a rerailer. Correspondence dated October, 1978 between Don and John Armstrong.

DIVISION 1 CONTEST - Flat Car With Load - September Category

STANDINGS **2016-17**

STANDARD KIT

Mike Bradley - 7 pts
David Hazlett - 2 pts
Bob Ashley, Jr. - 1 pt
Ray Lora - 1 pt

KIT - BASHED

Mike Bradley - 5 pts
Frank Williamson - 4 pts
Ray Lora - 2 pts
David Hazlett - 2 pts

CRAFTSMAN KIT

No entries

SCRATCH BUILT

No entries

Many thanks to
Matt Woods and
Lloyd Horst for co-chairing
the Contest Committee



**1st Place - Standard Kit
Mike Bradley**



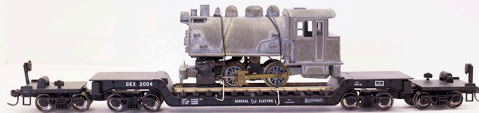
**1st Place - Kit-Bashed
Mike Bradley**



**2nd Place - Standard Kit
Mike Bradley**



**2nd Place - Kit-Bashed
Frank Williamson**



**3rd Place - Standard Kit
David Hazlett**



**3rd Place - Kit-Bashed
Ray Lora**

CONTEST TOPICS **FOR 2016-2017**

OCTOBER - Freight or
Passenger Depots (could
include the Jaite Station)

NOVEMBER - Wood-Chip
cars

JANUARY - Snow Fighting
Equipment

FEBRUARY - I got this at a
Flea Market and this is what I
did with it.

(Maybe something you got at
our November Flea Market)

MARCH - Large (45+ feet)
Billboard Covered Hopper
Car

APRIL - Servicing facilities -
Steam or Diesel

MAY - Passenger or
Business Car



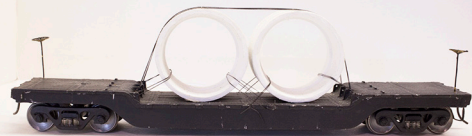
**Place - Standard Kit
Bob Ashley, Jr.**



**Place - Kit-Bashed
Ray Lora**



**Place - Standard Kit
David Hazlett**



**Place - Kit-Bashed
Frank Williamson**

DIVISION 1 CONTEST - Flat Car With Load - September Category



**Place - Standard Kit
Ray Lora**



**Place - Kit-Bashed
Mike Bradley**



**Place - Kit-Bashed
David Hazlett**

Module Report

We are looking for new venues and locations to set up and operate the modules. The Youngstown Model Railroad Association has invited the module group to show the HO Modules at their new location in Salem, OH. The McMenamy's location has been discontinued. We have been offered 8' x 100'. We will show the modules Sunday, January 8, 2017 and maybe Sunday, April 9, 2017. Details are being worked out and there will be more information at the next meeting.

The Berea show could not happen this year due to lack of space. Division 4 is going to investigate adding another building to the 2017 show and this might give us a chance to set up and operate there, next October. Please ask anyone who wants a module display to call me or anyone below.

We are hoping that we can build a T-module to allow the operation of an unused loop, or, add a yard when connected to another group. In the meantime, Dave Madden needs to finish his yard and we will be adding more scenery to our existing modules, also. Hopefully, we will have more places to show next year.

We welcome everyone to use our throttles, engines and rolling stock, anytime we are operating. If you have equipment that you want to run, bring it. It must be DCC ready and we can help program a new locomotive to get you started. If we can get you to do that, we hope to convince you to join us regularly. We are looking for new ideas. Those who build a 4' x 2' module with scenery, which is eight square feet minimum, can apply for the "Golden Spike" and other AP awards.

We will have a Module assembly clinic at the November meeting. We will actually assemble a module kit so you can see all the parts and wiring.

The Division portion of the 50-50 raffle is placed in the module fund. This fund is shared with the HO and Ntrak groups as needed for division owned equipment. Privately owned modules and equipment are the responsibility of the owner. All request for funds are to be presented to the Module Chairman.

Let's try to be generous and spend \$5.00 for six 50-50 raffle tickets instead of \$1.00 for one ticket. Your generosity in funding the Division 1 Module Group is appreciated.

Bob Ashley, Sr., Module Chairman, 330-644-4778 or rashleysr@msn.com HO, N & Z scales

Jim Williams, Asst. Module Chairman, 330-966-5477 or jamestwilliams46@yahoo.com HO & N scales

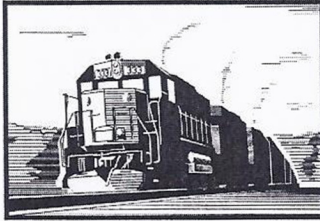
Don Bonk, NTRAK, 330-418-6860 or donaldbonk@gmail.com N scale

THIS MONTH'S MEETING
Sunday, October 16, 2016
Host - Gary Kohler
Portland Locomotive Works
Greenford Space Center
7600 W. South Range Road
Salem, OH 44460
2 PM

Gary's place is in the Greenford Space Center near the intersection of routes 165 and 99 near Salem. The address is 7600 W. South Range Road, Salem, OH 44460. This is an old school building. The entrance to Portland Locomotive works is through a plain steel door on the back side of the building. You can't get to it through any of the regular building entrances.

7th Year

5th Year



ROB'S TRAINS

333 East Main St.
Alliance, Ohio 44601
(330) 823-7222

Tues., Thur., Fri. Noon - 8 p.m.
Sat. 10 a.m. - 3 p.m.

e-mail: robstrains@roadrunner.com
Web site: www.robstrains.com

Carol Ann Bonk, ABR, GRI
REALTOR®

Cell: 330-936-9752
Office: 330-433-6015
Fax: 330-875-1179
CarolAnnBonk@kw.com

KELLER WILLIAMS®
LEGACY GROUP REALTY

4580 Stephen Circle, N.W., Suite 100, Canton, OH 44718



Let Carol help you find that perfect spare room, 3 car garage, or basement with a house attached.

4th Year

3rd Year



MICHAEL L. BRADLEY
LUTC, CISR



**BRADLEY INSURANCE
AGENCY**

851 W. Main St. Phone: (330) 296-7622
Ravenna, OH 44266 Fax: (330) 296-7672
www.mbradley.com

MAIL POUCH TOBACCO

Background Quality
Printed Paper Barn
Kits N•HO•O Scale

Ray Lora 1869 Whinnery Rd Salem Ohio 44460
rayandtwi@yahoo.com 330-332-5035

THANK YOU ALL FOR YOUR SUPPORT

LS & MJ Railroad
Little Scioto & Mingo Junction

216.402.8507

Jim Peters
Interested in operation send email:
jpeters711@yahoo.com

**THE
Yardley
AND
Hilton**
HO Scale Room Size
RAILROAD

RAY LORA
1869 WHINNERY RD 330-332-5035
SALEM OHIO 44460 RAYANDTWI@YAHOO.COM

BONK - RR
**Bankers of Ohio
and Northern
Kentucky Railroad**

**N-Scale
VISITOR'S PASS**

Donald and Carol Ann Bonk 7345 Hahn Street
Louisville, Ohio 44641 330-875-4567

**THE
TILLAMOOK
& ASTORIA**
RAILROAD COMPANY

Steve Zapytowski, President
1059 Cottage Gate Drive
Kent, OH 44240
330-678-4583
szapytowski@ne.rr.com

Western Oregon Circa 1900 to 1910 — HO and HO N3

THIS MONTH'S MEETING
Sunday, October 16, 2016
Host - Gary Kohler
Portland Locomotive Works
Greenford Space Center
7600 W. South Range Road
Salem, OH 44460
2 PM

Gary's place is in the Greenford Space Center near the intersection of routes 165 and 99 near Salem. The address is 7600 W South Range Road, Salem, OH 44460. This is an old school building. The entrance to Portland Locomotive works is through a plain steel door on the back side of the building. You can't get to it through any of the regular building entrances.

Train Shows and Open Houses

Railfanning Day at Painesville Depot - October 15

Located adjacent to CSX tracks, 10 AM - 5 PM

Old Eli's Train & Toy Show - October 29

Valley View Church, 2772 Simons Drive NW, Sugarcreek
Admission \$4, 10 AM - 4 PM

Medina Toy and Train Show - October 30

Medina County Fairgrounds
Admission \$4, 10 AM - 4 PM

Model TRAINing Day - November 6

Black River Landing & Transportation Center
421 Black River Lane, under the bridge
Admission FREE, 11 AM - 4 PM
Info: <http://www.div4trainingday.org>

Wolverine Railroad Club toy train show - November 13

876 Horace Brown Drive, Madison Heights, MI
Admission is \$3 with children under age 12 admitted free.
Information at <http://www.ttoswolverine.org>

Holiday Train Extravaganza, Miamitown, OH

Nov. 17 - Jan. 1

Admission is \$7, seniors admitted for \$5 and children under 5 free. 1 to 9 PM, Information at 859-468-3289.

Christmas Train and Toy Show

Lakeland Community College - Nov. 20

Admission is \$6 per person with a family admission of \$15.
Children ages 6-12 are \$3 with those under age 6 admitted free. 10 AM - 3 PM

**Great Lakes Division Train Collectors Association –
Thanksgiving Train Show - November 26**

UAW Hall at 5615 Chevrolet Blvd. in Parma.
Admission is \$6 and show hours are 10 AM - 3 PM

**Help Wanted
Rivers**

I really would love someone to come over and help me get started with my first river! Thank you,


James Peters, (216) 402-8507

Wanted

Kadee Quickie Control Panel


These are the push buttons that are long and silver, have a brass nail-like fitting on the bottom, are held in place by a white plastic ring, have a copper angled piece for one wire contact and have plastic buttons in orange, red or green that push into the top. If you have some you want to sell, contact David Hazlett at: dhazlett1@neo.rr.com





Pittsburgh, Youngstown & Ashtabula Railroad
www.pyamodelrailroad.com

Jim DiPaola
3201 Summit Road, Ravenna, OH 44266-9018
330-577-6052
Chief1RTFD@aol.com



DAVIES STEEL

PEDDLER FREIGHT

1304 Ada St.

Akron, OH 44306

Publication of Division1 - MCR - NMRA
The Akron, Canton, Youngstown Division

First Class

Division 1 Officers

Superintendent - Jim DiPaola	330-297-5571
Asst. Supt. - Steve Zapytowski	330-715-3444
Treasurer - Mike Bradley	330-325-7622

Division 1 Appointees

Clerk - Jim DiPaola	330-297-5571
PF Editor - Bruce Hukill	330-571-4037

Division 1 Volunteer Positions

Achievement Program - Jim Peters	216-402-8507
Apparel - Jim Williams	330-966-5477
Christmas Dinner - Randy Dettmer	330-653-3537
Clinics - Jim Peters	216-402-8507
Contest - Matt Woods	330-465-8724
- Lloyd Horst	419-846-3436
Membership - Larry Brown	330-221-6067
Modules:	
HO/Chair - Bob Ashley Sr.	330-644-4778
HO/NTRAK - Jim Williams	330-966-5477
NTRAK - Don Bonk	330-418-6860
Roster - Larry Brown	330-221-6067
Webmaster - Steve Zapytowski	330-715-3444

WHO TO CONTACT IN DIVISION 1 AND THE NMRA

Mid-Central Region

President - Steve Kaplan
email: MCRPREZ@HQ.NMRA.ORG

National Model Railroad Association

President - Charlie Getz
email: PRES@HQ.NMRA.ORG
Vice-President - Dave Thornton
email: VP@HQ.NMRA.ORG

The "Peddler Freight" is published each month September through November and January through June. Opinions expressed in this issue may not represent the opinions of the Editor, Division 1, MCR or NMRA. Suggested donation is \$20.00 a year. Checks payable to: Division 1 - MCR - NMRA, Inc. may be mailed to Bruce Hukill, Editor, 1304 Ada St., Akron, OH 44306.

